

An aerial architectural rendering of a coastal park and urban development. On the left, several tall, modern, light-colored buildings rise. The foreground and middle ground are filled with lush greenery, including numerous palm trees and dense foliage. A winding path or boardwalk cuts through the park. In the lower-left, a parking lot contains several cars. A large, curved, grassy area with people is visible. To the right, a body of water (the bay) is shown with a few birds flying overhead. In the distance, more buildings and a circular plaza are visible. The overall scene is bright and sunny.

# the Bay

**WATER QUALITY IMPROVEMENTS**  
**2.2.22**



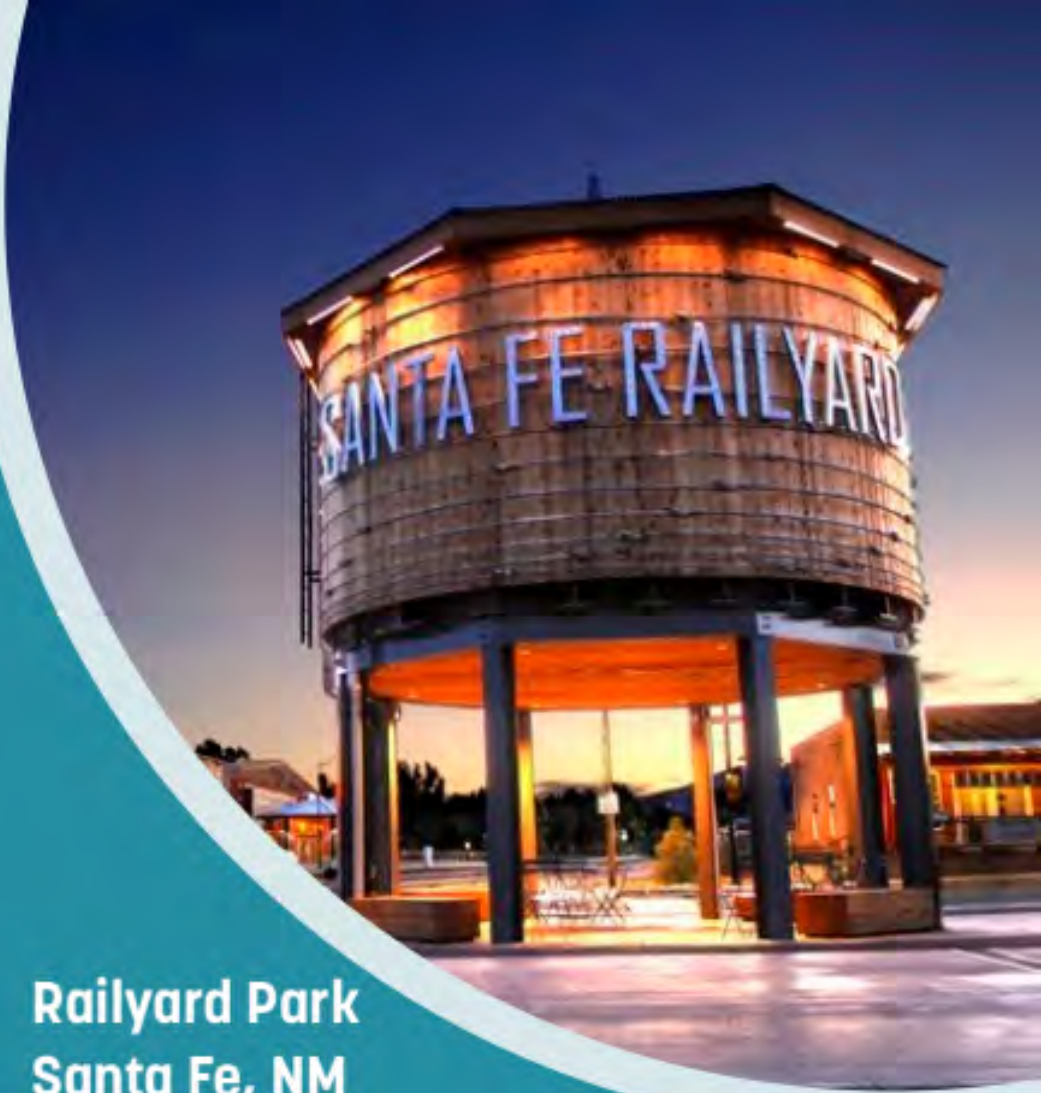
**Millenium Park  
Chicago, IL**



**Waterfront Park  
Charleston, SC**



**Railyard Park  
Santa Fe, NM**



**Curtis Hixon Park  
Tampa, FL**



# **Great Parks → Great Cities**

**Forsyth Park  
Savannah, GA**



**Central Park  
New York, NY**





# Guiding Principles



## **ASPIRATION/ TRANSFORMATION**

Imagine the possibilities of The Bay



## **GREEN & BLUE OASIS**

Celebrate natural beauty and environmental health



## **CONNECTED & ACCESSIBLE FOR ALL**

A walkable, safe district linking community and neighborhoods to The Bay



## **ENLIVENED DESTINATION**

A gathering place for family, friends and fun



## **CULTURAL VITALITY**

A hub for free arts & culture



## **ECONOMIC SUSTAINABILITY**

A financially feasible, sustainable long-term success





## BAYFRONT 20:20

Bayfront 20:20 is formed. The goal was to create consensus among community and neighborhood leaders about what the future could be for the Bayfront.



## SPBO IS FORMED AS A NON-PROFIT 501c3

The Sarasota Bayfront Planning Organization is formed as a non-profit 501c3.



## CITY COMMISSION APPROVED THE MASTER PLAN

On September 6, 2018, the Sarasota City Commission approved the Master Plan developed by the SBPO and Sasaki.



## CITY COMMISSION APPROVED PHASE 1 SITE PLAN

On March 8, 2021 the Sarasota City Commission approved the Phase 1 Site Plan.

2013

2014

2015

2016

2017

2018

2019

2020

2021

## CITY COMMISSION ADOPTED THE GUIDING PRINCIPLES

Through the outreach of Bayfront 20:20, community groups begin to sign on board for a unified common vision statement.



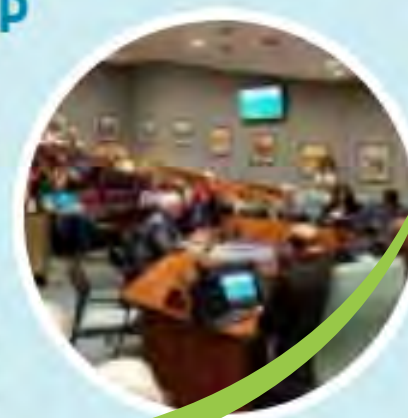
## MASTER PLAN TEAM SELECTED

After an exhaustive global search, Sasaki is chosen to proceed with a master plan of The Bay.



## THE CITY AND BAY PARK CONSERVANCY PARTNERSHIP

The Sarasota City Commission unanimously voted to approve a new partnership.



## TIF APPROVED

The City & County Commissions establish TIF for capital improvements in The Bay Park.



**170+**

Community/Public  
Meetings

**12,500+**

Attendees

**1,300+**

Founding Friends  
of The Bay

**8,600+**

Followers on Social Media

**154,000+**

Reached on Social Media

**200+**

Informational Videos

**180,000+**

Total Connections Through  
September 2021

**3** Community  
Surveys

**6,000+**

Survey Respondents





**Our Site - 1930s**



# Site Aerial



Turning a Parking Lot into a Park

# Approved Master Plan





# Current Master Plan





# Approved Phase 1 Site Plan



VAN WEZEL  
PERFORMING  
ARTS HALL

SUNSET  
BOARDWALK

RESILIENT  
ECOLOGICAL  
SHORELINE

READING ROOM

LAWN

BOULEVARD OF THE ARTS

KAYAK  
LAUNCH

MANGROVE  
WALK

BAY PARK  
CONSERVANCY

NORTH TAMiami TRAIL





**PHASE ONE BIRD'S EYE VIEW**



## Phase 1 Concession and Restrooms





# Phase 1 Playground







**Mangrove Bayou Walkway**





**Mangrove Bayou Walkway**







**Mangrove Bayou**







**Fountain Garden**

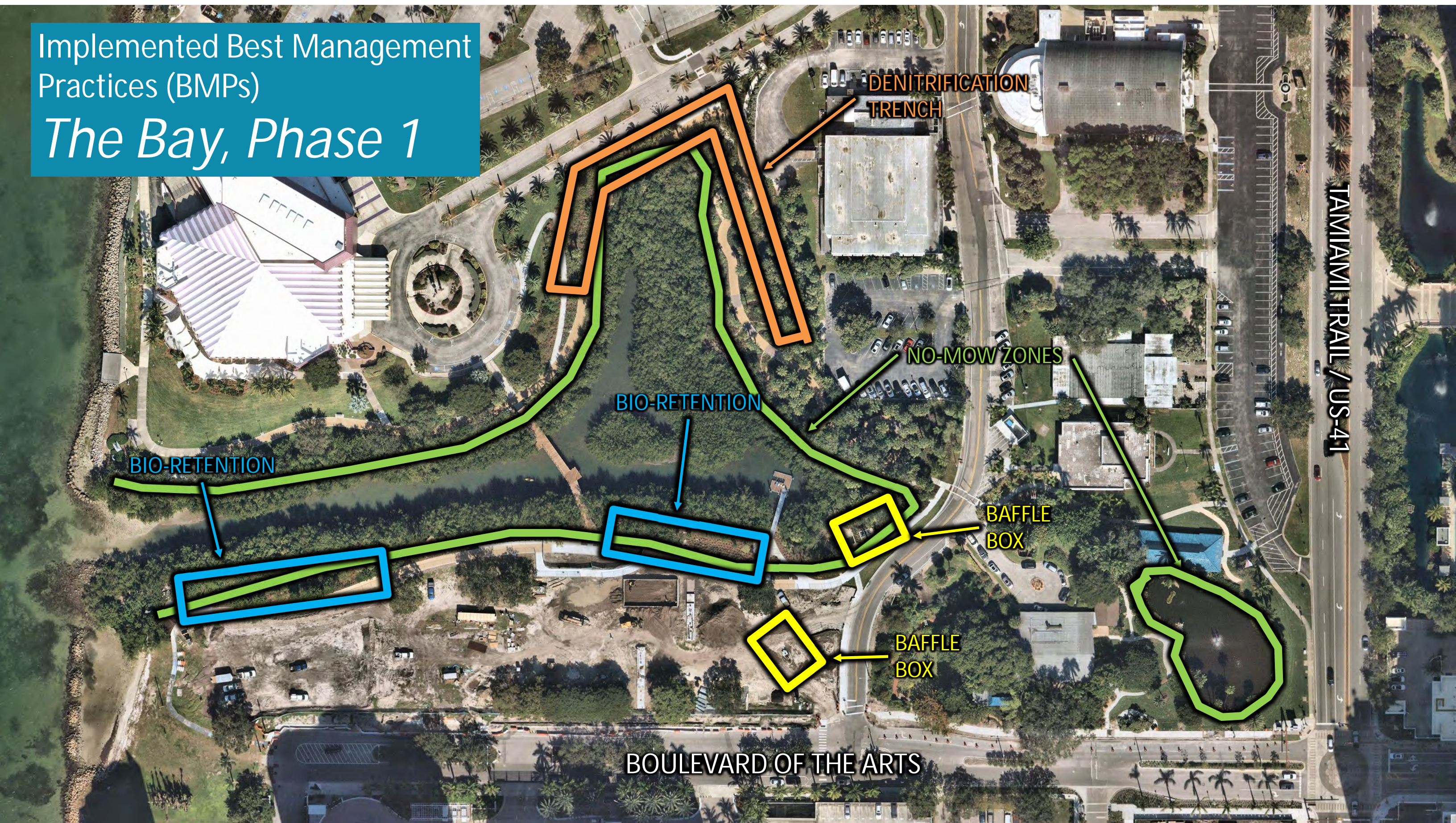


# Water Quality (Upland)



Implemented Best Management Practices (BMPs)

## *The Bay, Phase 1*



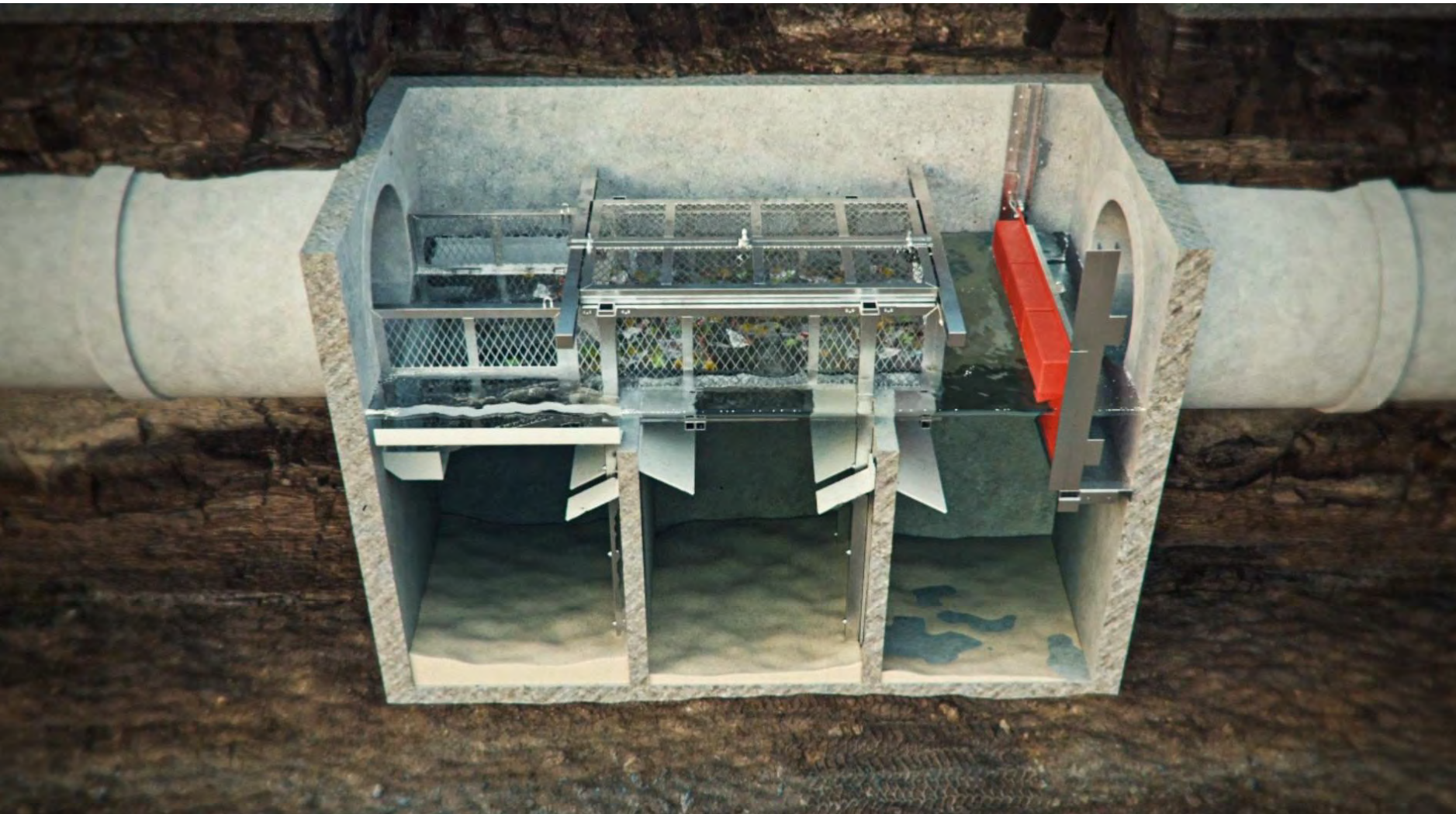
TAMIAMI TRAIL / US-41



Implemented Best Management  
Practices (BMPs)

*The Bay, Phase 1*

## BAFFLE BOX

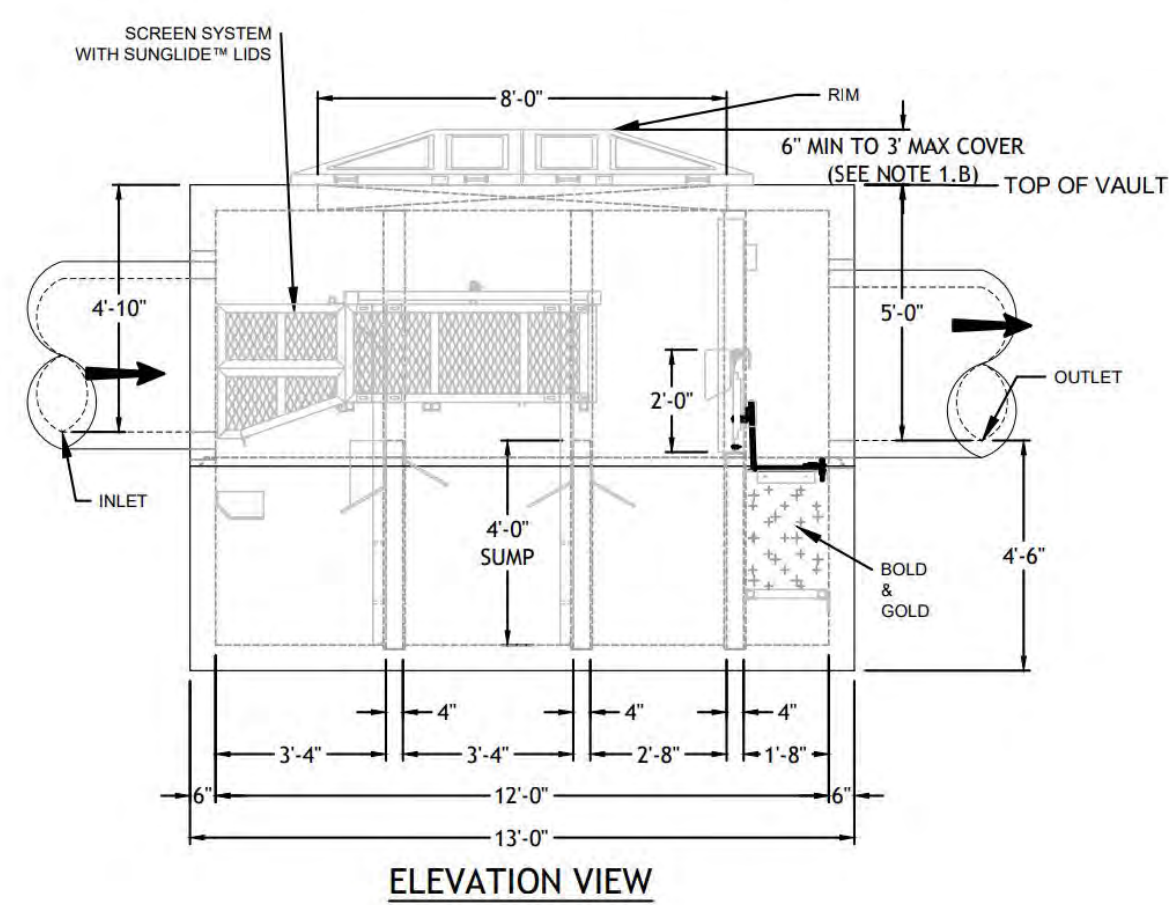
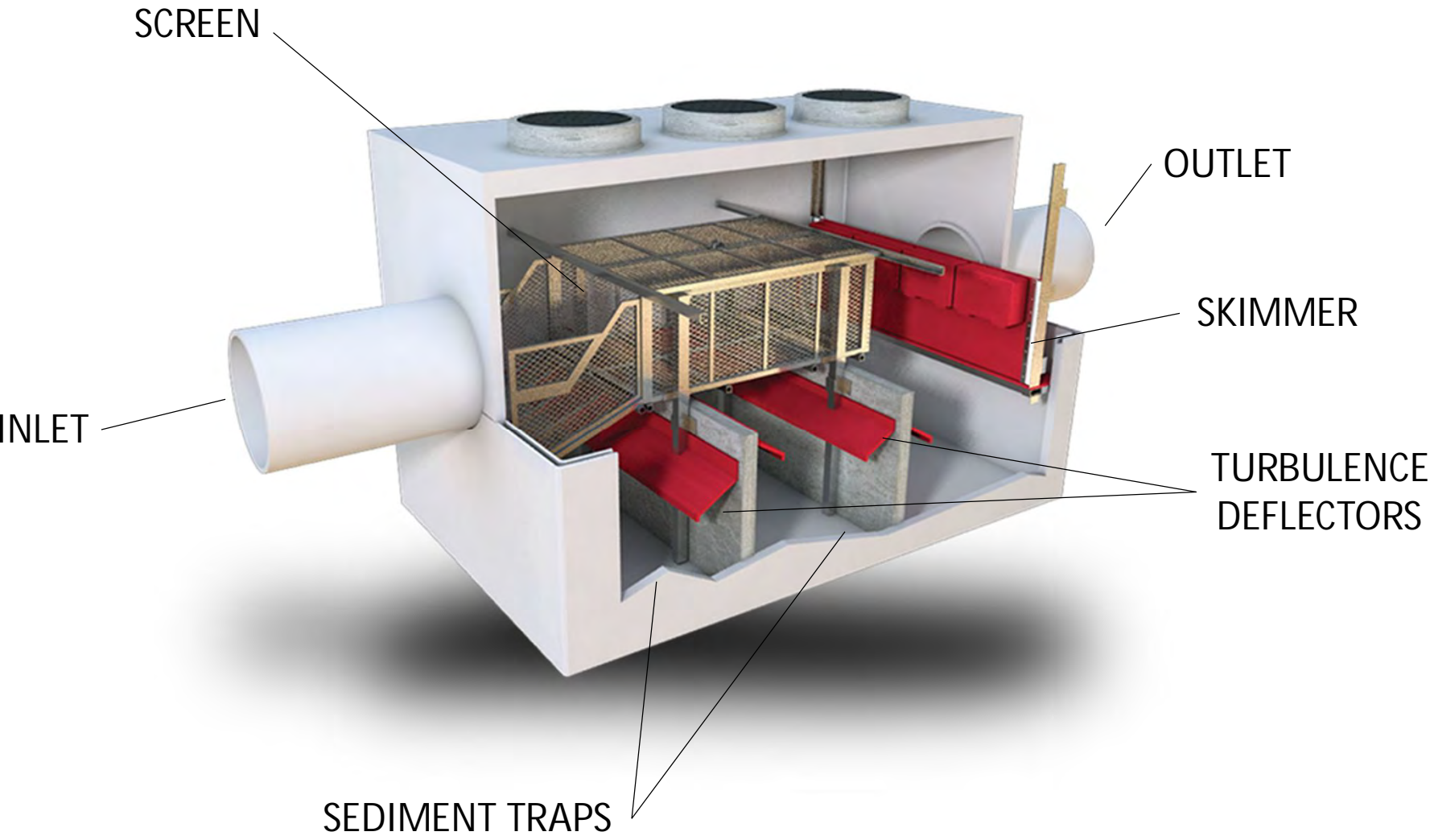




Implemented Best Management Practices (BMPs)

*The Bay, Phase 1*

BAFFLE BOX



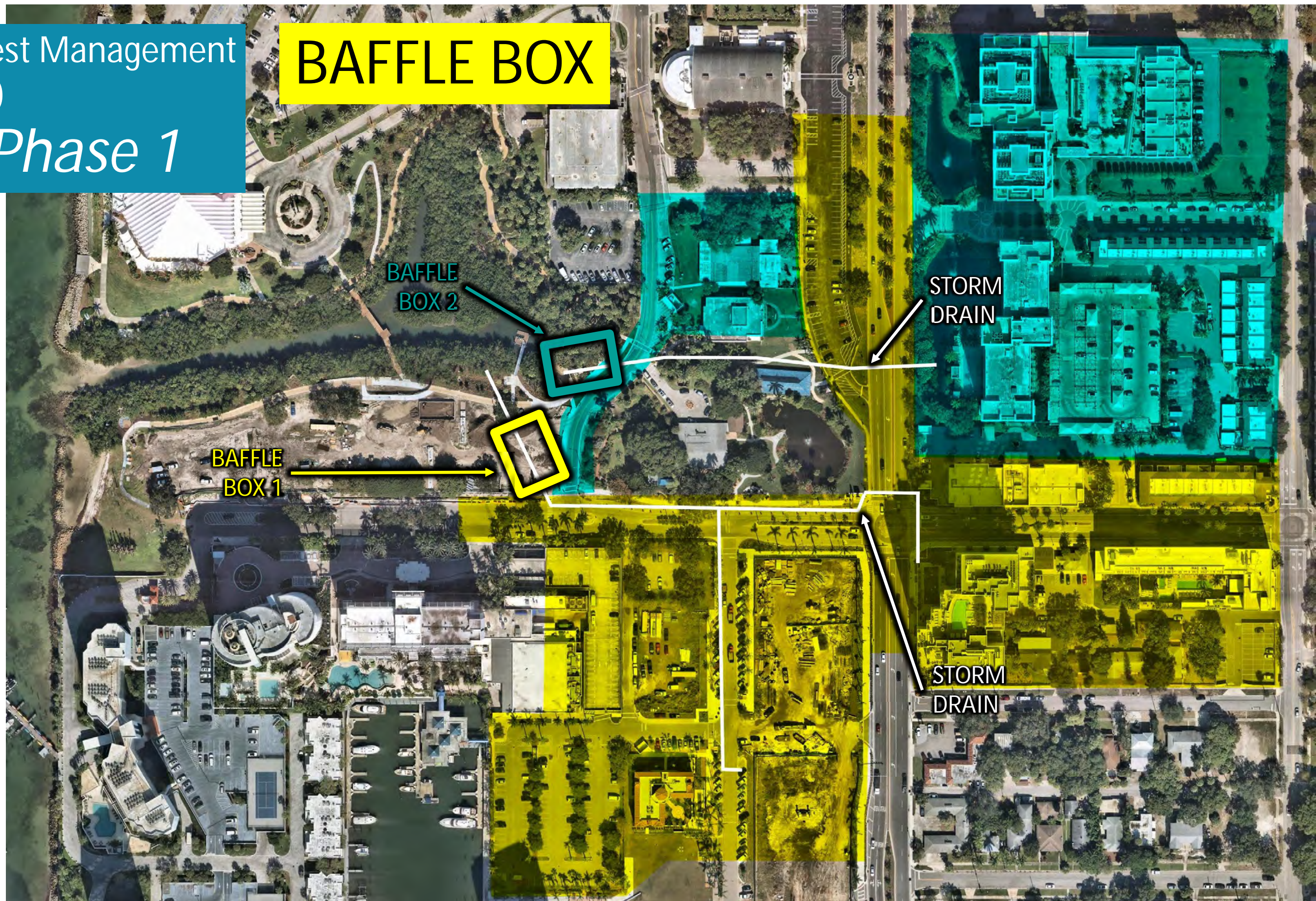


# Implemented Best Management Practices (BMPs)

## *The Bay, Phase 1*

- BAFFLE BOX 1: Over 18 acres urban runoff treated
- BAFFLE BOX 2: Over 8 acres urban runoff treated
- 15-45% TN / TP Removed
- 50% TSS Removed

### BAFFLE BOX





Implemented Best Management Practices (BMPs)

## *The Bay, Phase 1*

- 70-80% TN / TP Removed
- 90% TSS Removed

## BIO-RETENTION

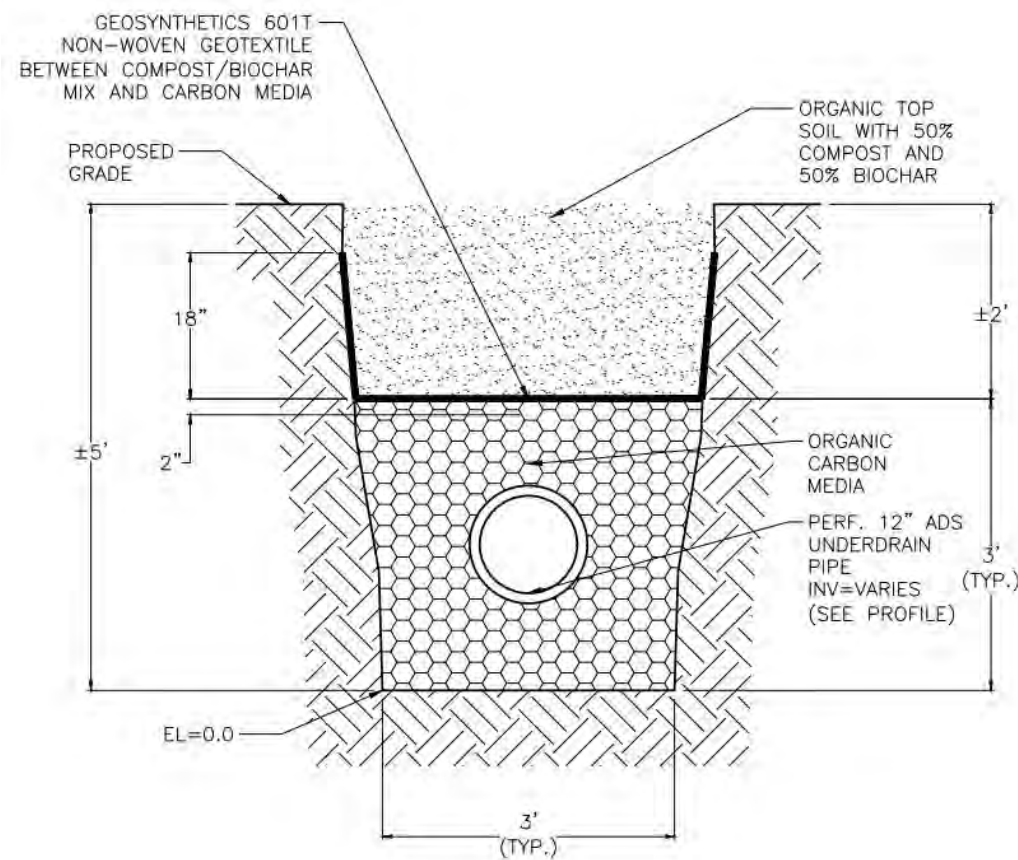




# Implemented Best Management Practices (BMPs)

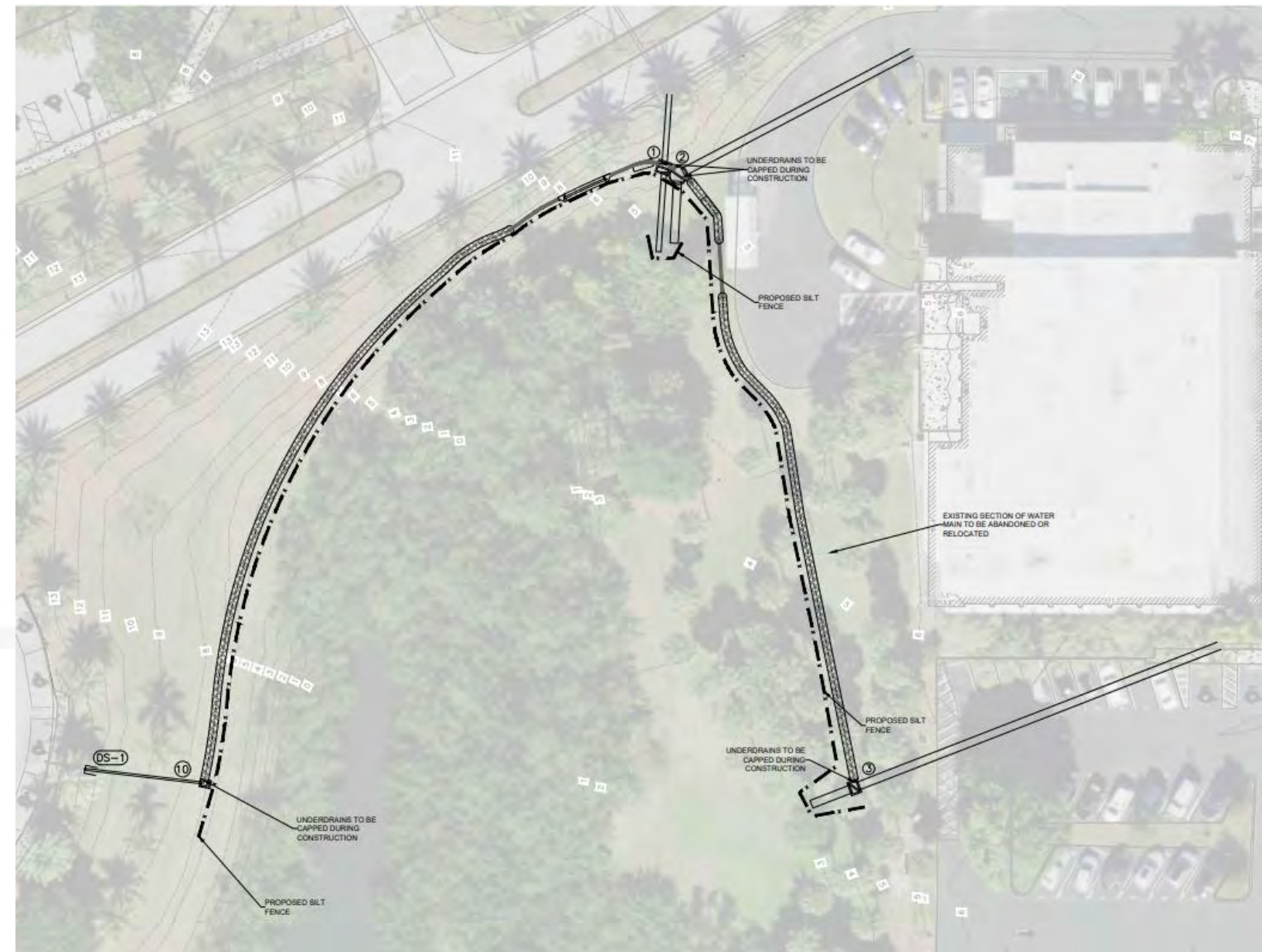
## *The Bay, Phase 1*

- Pilot project
- 600 Feet Long
- 50-90% expected TN / TP removal efficiency
- Can treat surface runoff and groundwater
- Organic material in trench provides energy for microorganisms that convert nitrates to nitrogen gas (denitrification)



TYPICAL DENITRIFICATION TRENCH DETAIL

## DENITRIFICATION TRENCH





Implemented Best Management  
Practices (BMPs)

*The Bay, Phase 1*

## DENITRIFICATION TRENCH





Implemented Best Management Practices (BMPs)

*The Bay, Phase 1*

NO-MOW ZONES





## Implemented Best Management Practices (BMPs)

### *The Bay, Phase 1*

Reducing impervious surface... ADD 1/3 2/3  
IMP REF

- Decreases nutrient loading
- Decreases runoff, resulting in more of the nutrient load filtering through soil

## REDUCING IMPERVIOUS SURFACE





# Water Quality (Submerged)

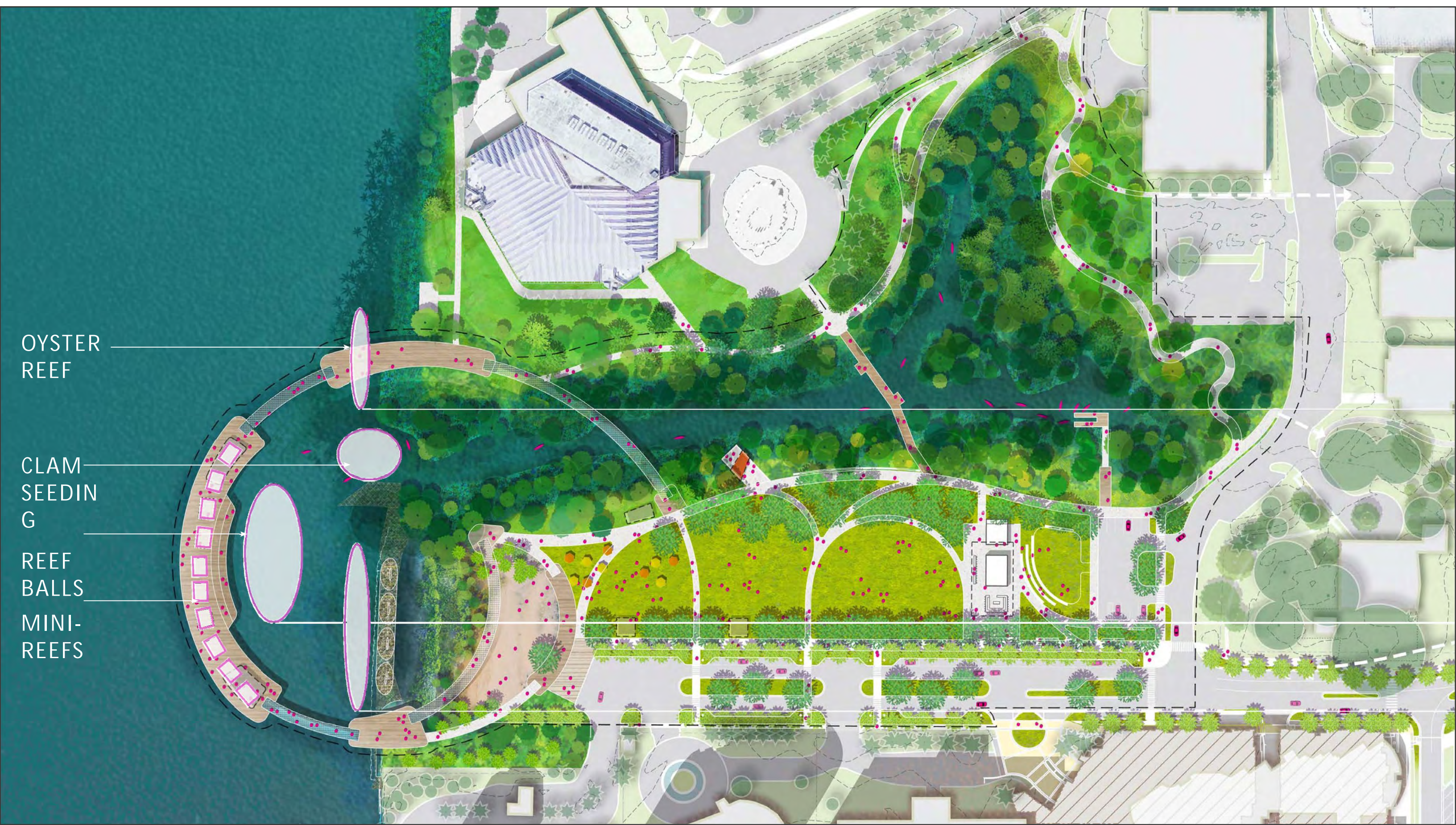


OYSTER  
REEF

CLAM  
SEEDIN  
G

REEF  
BALLS

MINI-  
REEFS





# OYSTER REEF

- Oysters are a natural filtration system that improve water quality
- A single oyster can filter up to 50 gallons of seawater per day
- Provide erosion protection
- Resistant to the effects of red tide
- Can use oysters from restaurant waste





# CLAM SEEDING

- Clams are also a natural filtration system that improve water quality
- They live in soft bottoms where oysters are not found
- A single clam can filter up to 20 gallons of seawater per day
- Resistant to the effects of red tide
- Sarasota Bay Watch (SBW) with the Mote Marine Laboratory and Florida Fish & Wildlife Research Institute (FWRI) will seed and monitor the clams





# REEF BALLS

- Mimic natural reef habitat
- Made of marine-friendly materials
- Snorkeling attraction for visitors





# MINI REEFS

- Simulate function of mangrove roots (habitat for filtering sea life and fish)
- Improve water quality within 12–15-foot radius
- Grows over 300 fish per year
- Grows over 200 crabs per year
- Cleans over 30,000 gallons of water per day





# SEAGRASS PLANTING

- Will improve water clarity
- Provides food and shelter for marine life





The Future of Water Quality at  
*The Bay*





A wide-angle photograph of a sunset over a large body of water. The sky is filled with soft, colorful clouds in shades of orange, yellow, and blue. The sun is low on the horizon, creating a bright glow. The water reflects the colors of the sky. In the distance, a city skyline is visible on the left side. The text 'the Bay' is overlaid in the center, with 'the' in a light blue script font and 'Bay' in a white script font.

*the Bay*